

A206 **CONVEYOR DRYING/CURING OVEN**



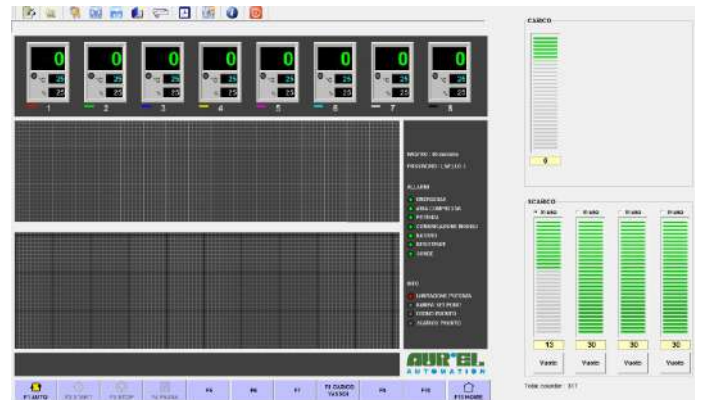
Aurel A206 is a conveyor oven for drying thick film pastes and curing polymeric pastes, adhesives, resins, glues etc.

Far IR heating is the recommended way to dry and cure properly printed wet pastes, especially for thick film circuits.

Indeed, infrared heat waves penetrate first the core of the material, then dry outwardly to the surface, avoiding the typical "Dried skin effect" that can trap the solvents inside causing cracks in the further steps of the process.

MAIN FEATURES

- The oven is controlled by a digital thermo-regulator
The conveyor speed is controlled up to 225 mm/min
- The muffle is made of stainless steel
- Venturi system with adjustable for controlled exhaust
- and input curtains
Heating with ceramic panels 50% convection type
- and 50% far IR
Conveyor belt: Stainless steel, silicon, teflon/glass,
- special finger for double side printed substrates



USER FRIENDLY INTERFACE

RACK FOR MAGAZINE



FINGER FOR DOUBLE SIDE PRINTED SUBSTRATE



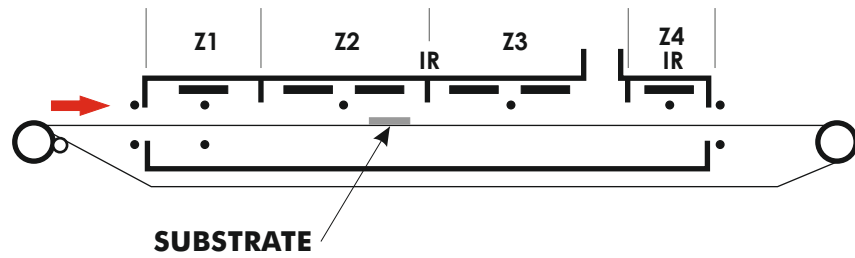
TEFLON BELT



STAINLESS STEEL BELT

APPLICATIONS

- Thick film circuits
- Adhesives and coatings
- Resins and glues
- Polymeric pastes



CENTRIFUGAL FANS TO COOL DOWN THE PARTS



OTHER OPTIONS

- More zones
- Centrifugal Fans to cool down the parts
- Conveyor cleaning water and ultrasonic system
- Temperature profiler
- UV LED Curing area
- Stand Alone Exhaust aspirator and filtering
- Sensor at the exit of the dryer with acoustic and light warning
- Custom size of buffer & muffle
- Automatic Loading/Unloading



A206 WITH AUTOMATIC LOADER / UNLOADER

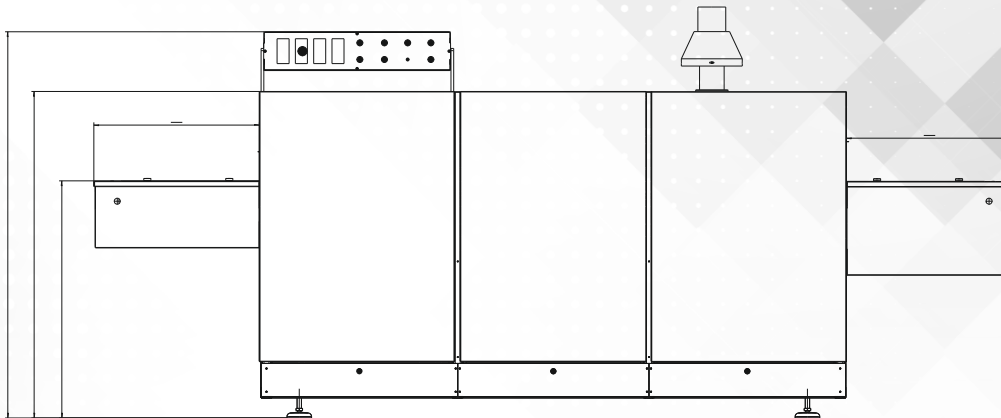
FEATURES

Belt width	200 ÷ 1000 mm
Conveyor Belt	Stainless steel, silicon, teflon/glass, special finger for double side printed substrates
Maximum height of the substrates	50 mm
Speed Range	0 ÷ 225 mm/min
Temperature	Up to 250°C
Zone	4 (more zones on request)
Power Rating	12 - 25Kw
Heated Length	1800 - 2500 mm
Belt Height	900 mm

DIMENSIONS & UTILITIES

Dimensions:	3300L x 600/1300 W x 1350 H mm
Approx weight	350/700 Kg
Compressed air supply	5 Ate - 100 NI/min MIN
Power supply	400V 3/N 50Hz

FRONT VIEW



SIDE VIEW

